

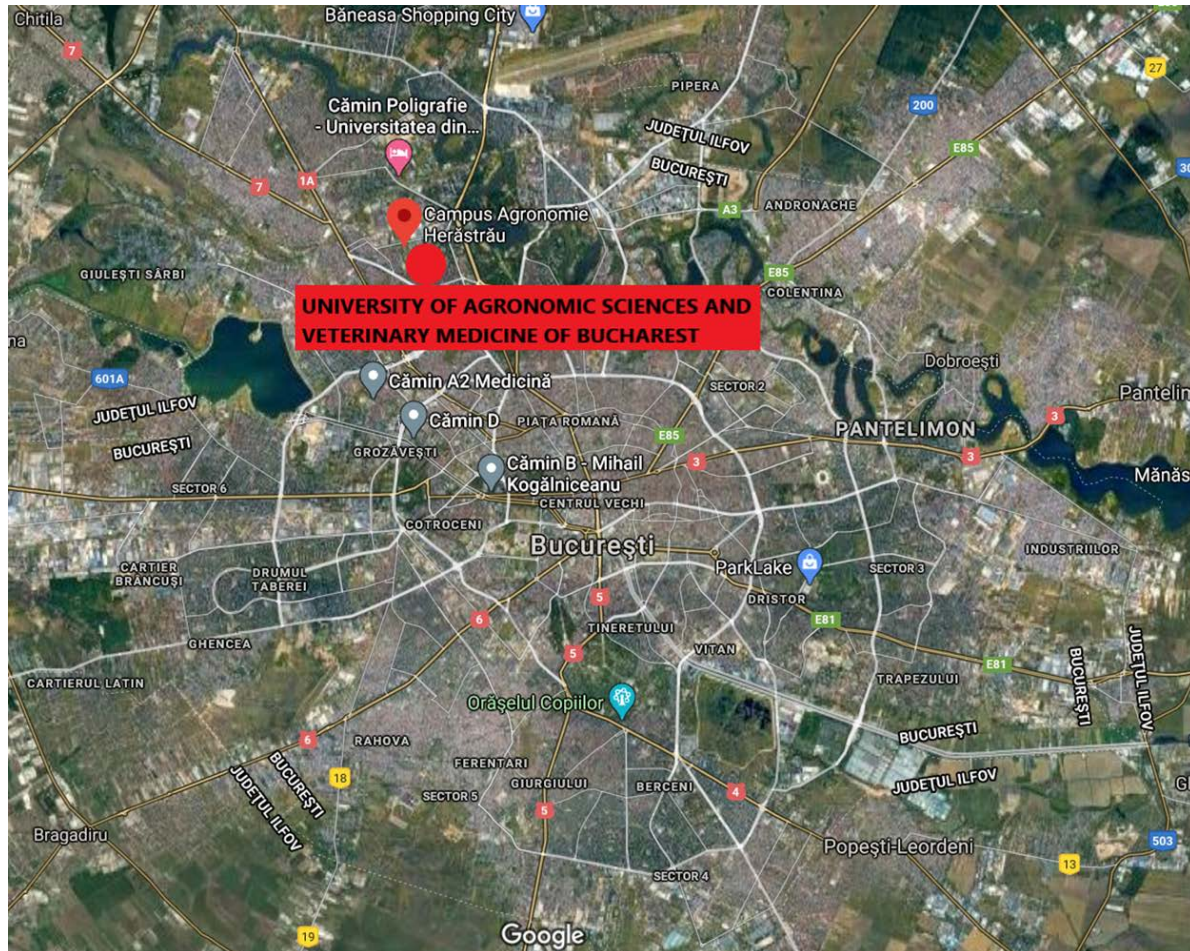


The Dendrological Park inside the University of Agronomic Sciences and Veterinary Medicine of Bucharest Campus

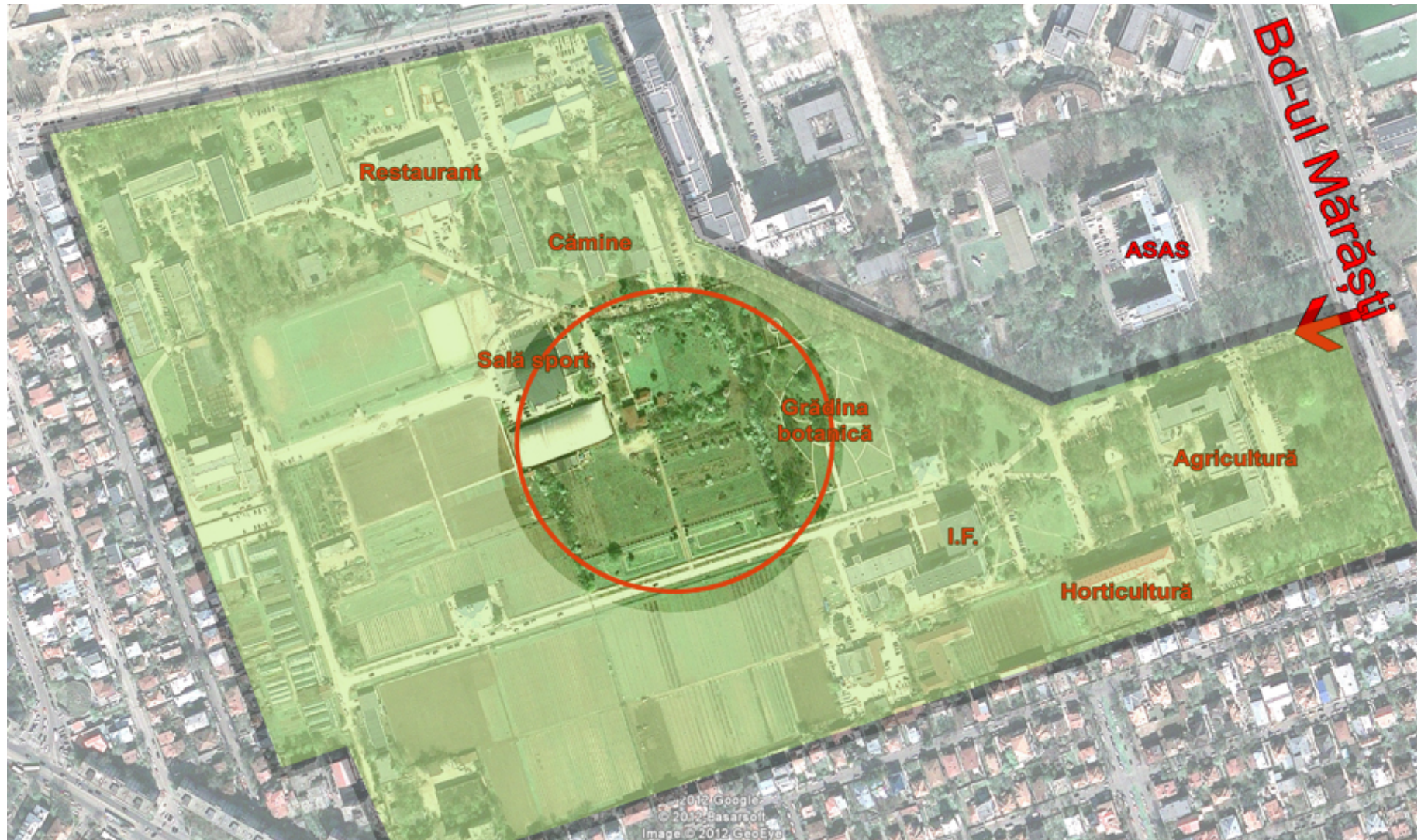
Student presenting: Adelina Scorobete

(II year of study at Landscaping, Biodiversity and Ornamental Horticulture Department)

Context



Beginings



The initial intention

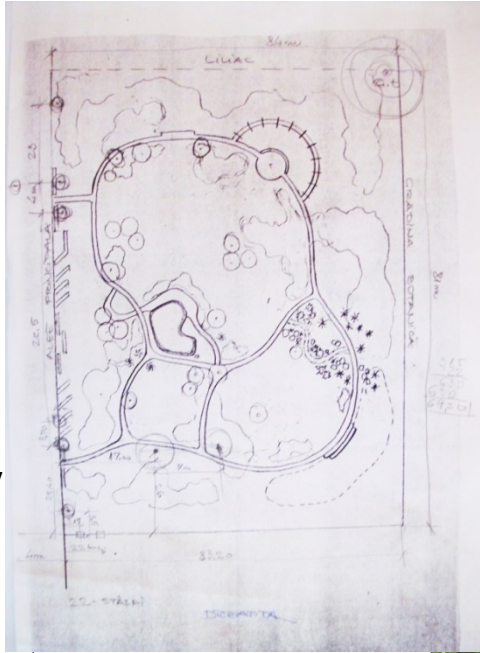
Elisabeta Dobrescu, at her course of Landscape Work Technique organised a project contest for the park to be done as a learning task.

Andrei Zelenco, a former student, who graduated with the 3rd class that ever attended our department, came up with the plan of the park that we can see today, winning the contest.

The park started to get to its shape in 2005 being helped by students (who provided practical labour) and more than 13 sponsors (who brought materials and employees).

The Czech Alley is surrounded by trees and shrubs donated by The Czech Nursery Association through The Embassy of The Czech Republic.

There was a low budget project and the first public-private partnership of the university. Everything was done only by the goodwill of the people who have chosen to get involved.

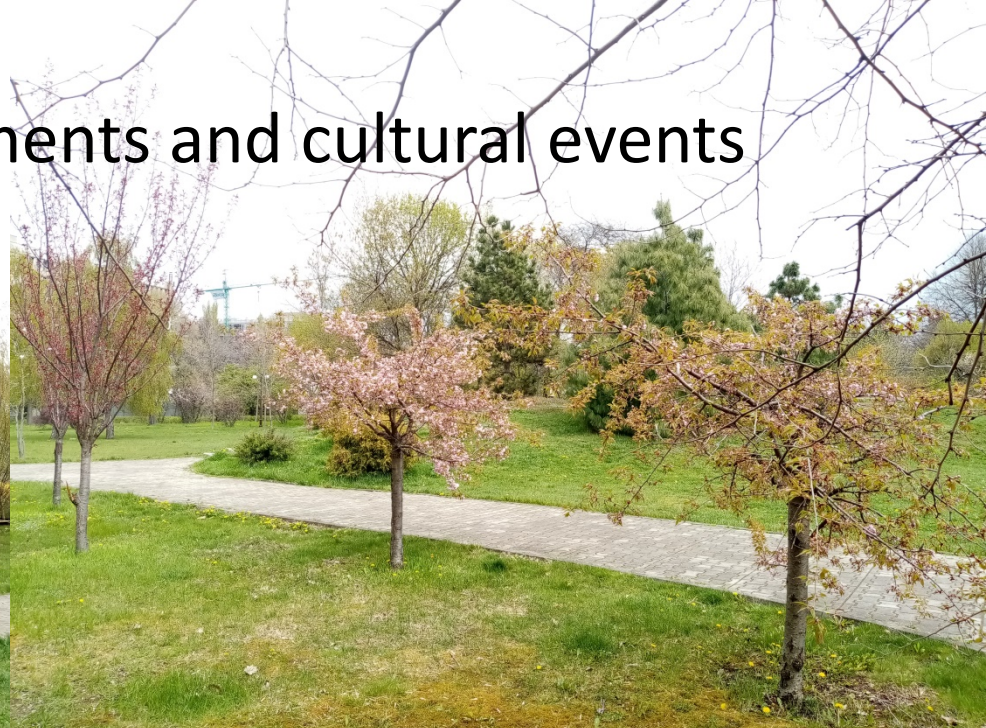




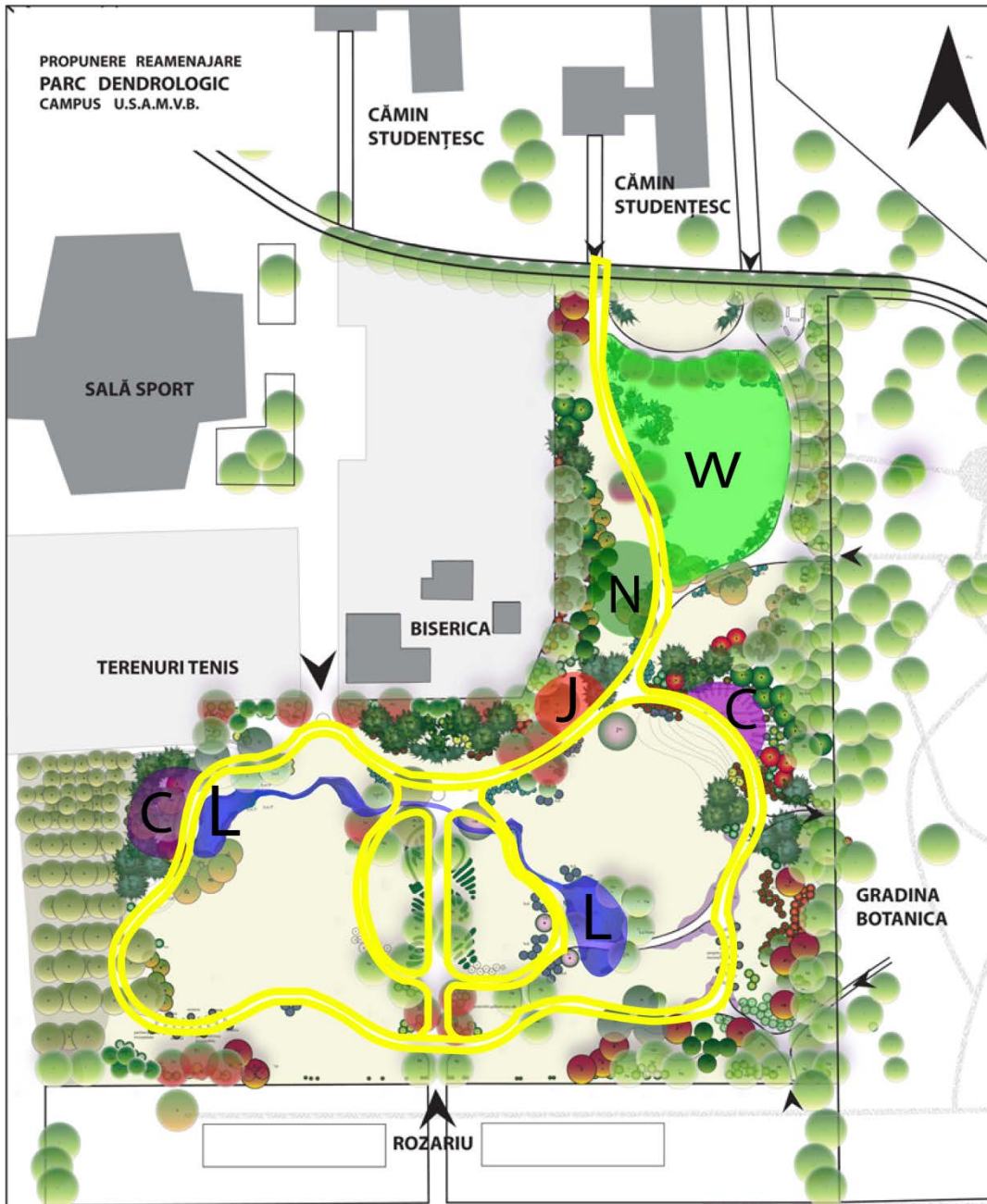


A field for experiments and cultural events

Romanian Scouts planted 6 cherry trees, as a symbol of their name. They came to see them growing and blooming every year, for 7 years now.



Now



There are several main zones (designed on purpose) where experiments, studies and other cultural activities and learning experiences can be conducted.

We have an area for workshops (W). There is a zone suited for cultural activities and leisure with a small elevation where anyone could enjoy a concert, for example (C to the right, C from the left is more appropriate for socialization and resting just like the Nautilus pavilion – N - is). The lakes (L) offer a nice view and they are refreshing. J is the area of the Japanese cherry trees planted by the Scouts.

They all offer a nice field of observation together with the walkways and the diversity of ornamental plant species that can be found on the entire park.

The park itself has the potential to stir students curiosity and to engage them into a deeper need for personal study completing the botanical, dendrological, topographical and classes of other kind that benefit from having such place where some of the course are conducted.



1st year



2nd year



People using the park





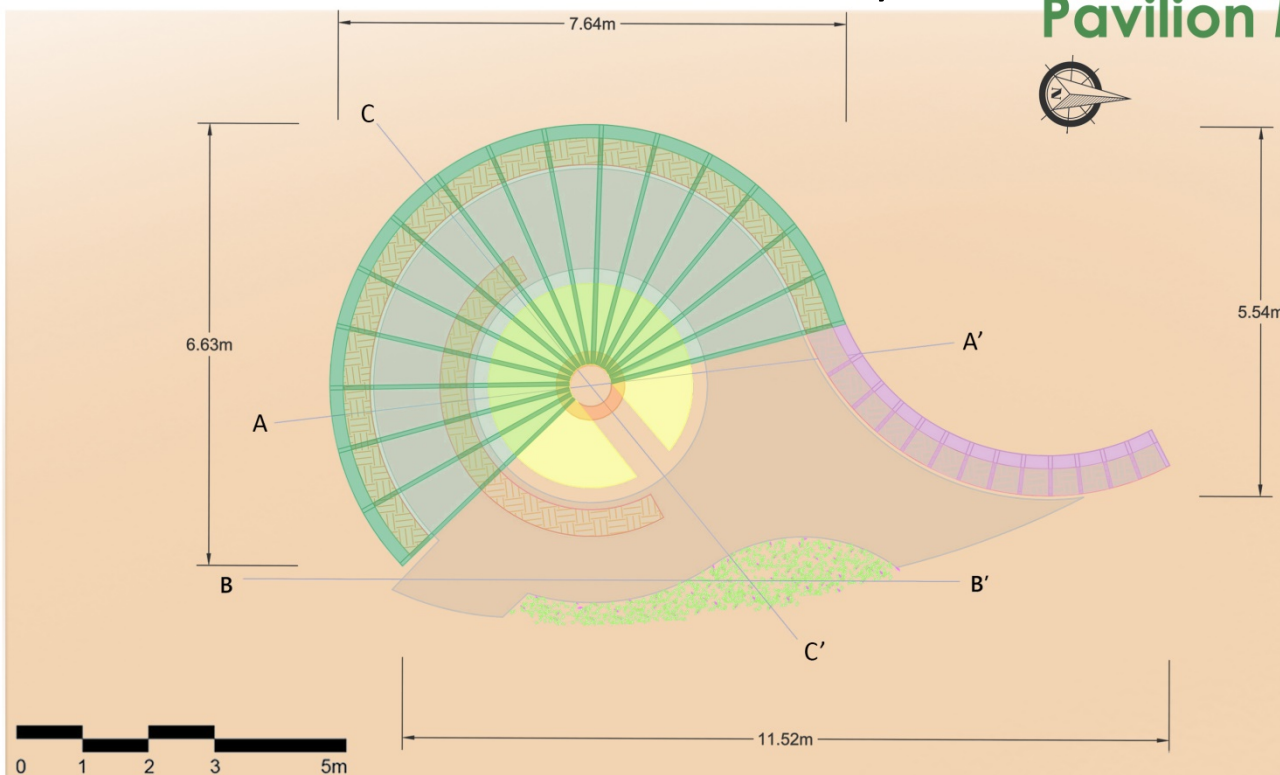
Students using the park with their professors





Leisure installation contest conducted by Elisabeta Dobrescu

Pavilion Nautilus

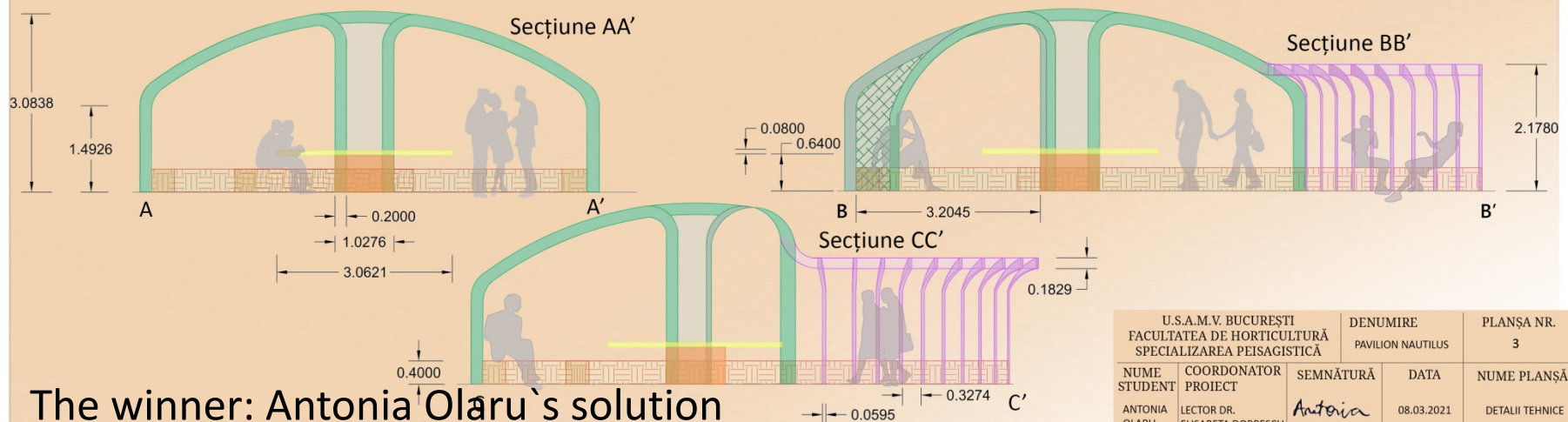


Detalii tehnice

Pentru realizarea acestei structuri vegetale se vor folosi ramuri de *Salix* (alese pentru maleabilitatea și rezistența sa în timp), întrețesute între ele pentru a forma scheletul pavilionului. Acestea vor fi asigurate de către furnizorii de materiale și servicii, iar studenții vor fi coordonați de cadrele de specialitate și de peisagiștii cu experiență în realizarea acestor tipuri de structuri.

Mobilierul va fi realizat din lemn OSB sau din paleți de lemn, ce vor fi prelucrați pentru a urmări conturul circular al acestora din plan.

Va deveni un loc de relaxare, destinat pentru studiu, pentru servit masa, pentru workshop-uri sau pentru alte activități recreative.



The winner: Antonia Olaru's solution

U.S.A.M.V. BUCUREȘTI FACULTATEA DE HORTICULTURĂ SPECIALIZAREA PEISAGISTICĂ		DENUMIRE PAVILION NAUTILUS	PLANȘA NR. 3	
NUME STUDENT	COORDONATOR PROIECT	SEMNĂTURĂ	DATA	NUME PLANȘĂ
ANTONIA OLARU	LECTOR DR. ELISABETA DOBRESCU	Antonia	08.03.2021	DETALII TEHNICE

The Nautilus workshop





Next projects inside the park

- My year of study is coming up with improvements this semester- it is a school task at Landscape planning;
- A collection of gramineous and one of Irises is being planned;
- A new sitting place will be done near the Rosarium- which is reconfigured right now;
- There will be more projects to be done at Landscape Work Technique- pretty soon.



